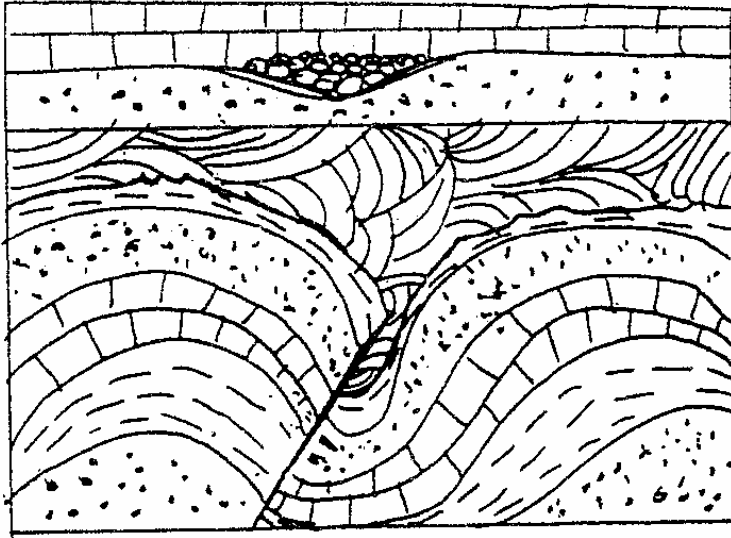


- 11. Use models to analyze the size and shape of Earth, its surface and its interior (e.g., globes, topographic maps, satellite images).
- 14. Explain that folding, faulting and uplifting can rearrange the rock layers so the youngest is not always found on top.

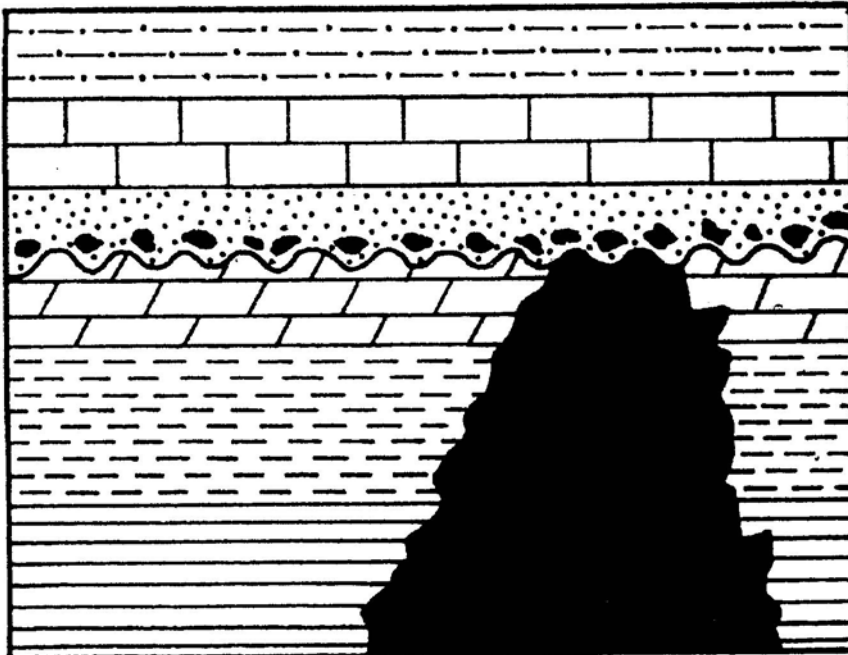
### Geochronology Practice Problems

Number the events that take place in each illustration. Give your reasons for the order you determined.

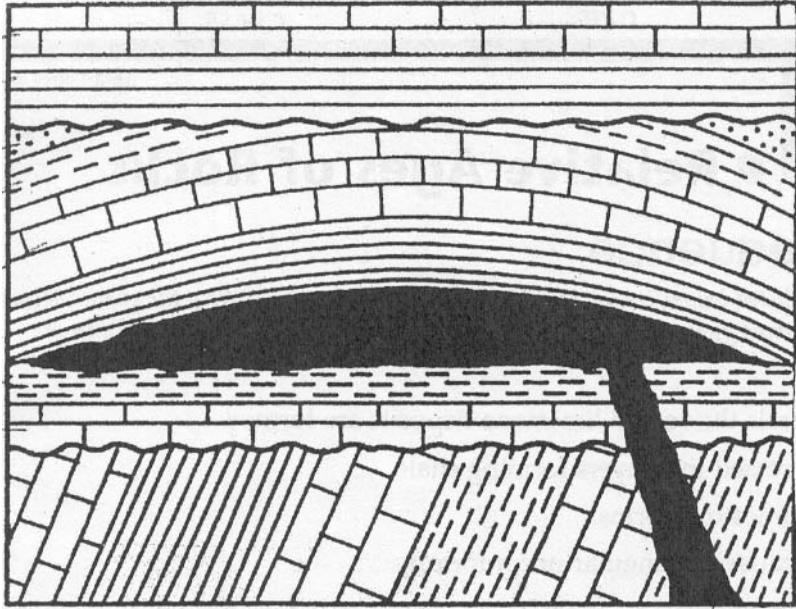
1.



2.



3.



4.

